

2025 IWWF Pan American Senior Waterski Championships - Bulletin #3 (updates in red)

We have the pleasure to invite all Federations to the 2025 IWWF Senior Pan Am Championships to be held by Pickos Ski School October 1-5, 2025. Pickos Ski School is looking forward to seeing you here and receiving your intention to participate as soon as possible. Official details will be updated via www.skipickos.com as well as in Bulletin #2.

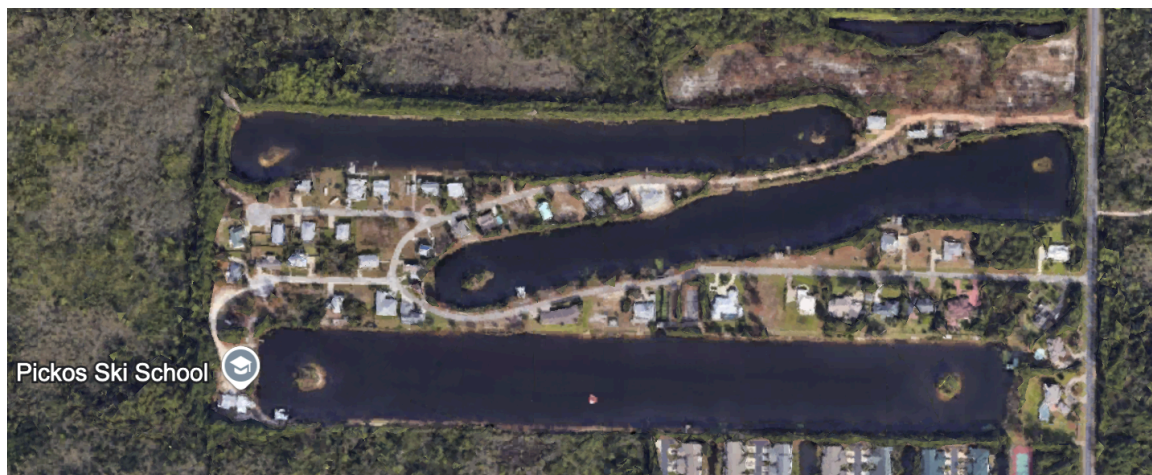
EVENT DIRECTOR: Caitlin McGinty

Telephone: +1 317-372-1088

Email: caitmccginty@gmail.com

1.1 THE SITE

Pickos Ski School is a two man-made (2 southernmost lakes) lakes water ski community located in Santa Rosa Beach, Florida. Surrounded by Florida State Forests and a quick 15 minute walk / 5 minute drive from some of the world's most beautiful beaches.



1.2 WHAT TO DO IN THE AREA

Considered “The Luckiest Fishing Village” and “The Emerald Coast”, make sure to enjoy the beach, fantastic live music at local restaurants, and shopping while here. A few great sites to check to see what is happening around us:

[Visitsouthwalton.com](https://visitsouthwalton.com/), 30a.com, <https://grandboulevard.com/>



1.3 ACTIVITIES IN THE AREA

Fishing - Fresh Water, Gulf of Mexico and Deepwater. Charters available!

Beach: Enjoy the white sand beaches where the sand squeaks beneath your feet and the water is a beautiful emerald color. Check out these beach cams to see the conditions!

<https://www.livebeaches.com/city/santa-rosa-beach-fl/>

Shopping: This outdoor shopping center is home to over 110 designer and name brand outlet stores, anything you need! <https://www.premiumoutlets.com/outlet/silver-sands/about>

Luxury shopping center closest to site: <https://grandboulevard.com/>

Golf: South Walton is home to some of Florida's top rated golf courses, check them out here, <https://30a.com/golf/>

Parks: 40% of the land in South Walton is preserved for nature and we are home to amazing inlet lakes and beautiful sand dunes. Check out the parks near us here,

<https://www.visitsouthwalton.com/discover-our-parks/>

1.4 HOST HOTEL

[Homes2 By Hilton](#) has a room block available on a first come, first serve basis. Reservation link [HERE](#). This property is only a 7-minute drive to the lakes and next to Walmart, First Watch, McDonalds. Rooms have a full-sized refrigerator, microwave, coffee maker, etc.

- King Room - \$110/night
- Queen Room - \$122/night



Other options:

- [Hyatt Place](#); 5 miles, 10 minutes from site
- [Courtyard by Marriott](#); 5 miles, 10 minutes from site



2025 IWWF Pan American Senior Waterski Championships - Bulletin #3 (updates in red)

- Airbnb/VRBO

1.5 AIRPORT

Option #1: Northwest Florida Beaches International Airport (ECP), which is about a 45-55 minute drive to/from the official hotel. All major car rental companies are represented at the airport.

Option #2: Destin-Ft. Walton Beach Airport (VPS) is about 45-50 minute drive to/from the official hotel. All major car rental companies are represented at the airport.

Taxi and shuttle from the airports to the site or official hotel should cost around \$60-\$120 depending on the size of the car.

1.6 TOURNAMENT SCHEDULE



2025 IWWF Pan American Senior Waterski Championships - Bulletin #3 (updates in red)

SR. PAN AM CHAMPIONSHIPS 2025					
Wednesday, October 1			Saturday, October 4th		
8:30 AM start	Slalom Semi Div. 75	Lake 2	8:30 AM start	Slalom Final Div. 80	Lake 2
following	Slalom Semi Div. 70	Lake 2	following	Slalom Final Div. 75	Lake 2
following	Slalom Semi Div. 65	Lake 2	following	Slalom Final Div. 70	Lake 2
following	Tricks Semi Div. 80	Lake 1	following	Slalom Final Div. 65	Lake 2
following	Tricks Semi Div. 85	Lake 1	following	Jump Final Div. 75	Lake 1
following	Tricks Semi Div. 70	Lake 1	following	Jump Final Div. 70	Lake 1
following	Tricks Semi Div. 65	Lake 1	following	Jump Final Div. 65	Lake 1
following	Tricks Semi Div. 55	Lake 1	following	Trick Finals Div. 55	Lake 1
OPENING CEREMONIES ~6 PM CST			following	Trick Finals Div. 45	Lake 1
Thursday, October 2nd			following	Trick Finals Div. 35	Lake 1
8:30 AM start	Slalom Semi Div. 45	Lake 2	Sunday, October 5th		
following	Slalom Semi Div. 55	Lake 2	following	Slalom Final Div. 55	Lake 2
following	Jump Semi Div. 75	Lake 1	following	Slalom Final Div. 45	Lake 2
following	Jump Semi Div. 70	Lake 1	following	Slalom Final Div. 35	Lake 2
following	Jump Semi Div. 65	Lake 1	following	Jump Final Div. 55	Lake 1
following	Trick Semi Div. 45	Lake 1	following	Jump Final Div. 45	Lake 1
following	Trick Semi Div. 35	Lake 1	following	Jump Final Div. 35	Lake 1
Friday, October 3rd			FINAL BANQUET ~7 PM CST		
8:30 AM start	Slalom Semi Div. 35	Lake 2			
following	Jump Semi Div. 55	Lake 1			
following	Jump Semi Div. 45	Lake 1			
following	Jump Semi Div. 35	Lake 1			
following	Trick Finals Div. 80	Lake 1			
following	Trick Finals Div. 75	Lake 1			
following	Trick Finals Div. 70	Lake 1			
following	Trick Finals Div. 65	Lake 1			

1.7 FAMILIARIZATION

Official familiarization will be offered on Lake 1 and 2. The order for familiarization will be based on the team results from the previous Championships with the last placed team athletes going first, and shall be grouped by event, i.e., slalom familiarization, trick familiarization and jump familiarization (by jump height) will be grouped together. Any athlete whose time has not been paid for at least 30 days before the scheduled start of the event, or who is not ready to ski in accordance with the schedule, will lose their official familiarization time.

The cost per hour for Official familiarization is \$300 and due by September 15th. Federations should attempt to pay for all familiarization in one payment via PayPal,



2025 IWWF Pan American Senior Waterski Championships - Bulletin #3 (updates in red)

info@skicory.com (and payment must include processing fees of +3-5%). If payment does not include fees, your familiarization is not confirmed. A schedule will be posted 15 days before unofficial practice begins.

Slalom skiers will receive – 4 passes or 6 minutes whichever is less

Tricks skiers will receive – 2 passes or 5 minutes whichever is less

Jump skiers will receive – 3 passes or 6 minutes whichever is less

MONDAY SEPTEMBER 29TH	
SLALOM - LAKE 2	Country
8:30 - 8:42	Peru
8:43 - 9:01	Chile
9:02 - 9:26	Colombia
9:27 - 9:57	Brazil
9:58 - 10:46	Mexico
10:47 - 10:59 GAS	GAS
11:00 - 13:48	Canada
13:49 - 13:59 GAS	GAS
14:00 - 18:10 (with a GAS stop in between)	USA
TRICKS - LAKE 1	
13:00 - 13:05	Chile
13:06 - 13:21	Colombia
13:22 - 13:27	Brazil
13:28 - 13:33	Mexico
13:34 - 14:29	Canada
JUMP - LAKE 1	
15:00 - 15:06	Colombia
15:07 - 15:37	Canada
TUESDAY SEPTEMBER 30TH	
TRICKS - LAKE 1	Country
8:30 - 12:00 (with a GAS stop in between)	USA
JUMP - LAKE 2	
12:30 - 15:00	USA

1.8 DATES TO KNOW

- Unofficial Practice: September 22-28
- Familiarization: September 29-30 (dependent on number of entries)
- Tournament: October 1-5

1.9 QUALIFICATIONS:

- a) Rules identical to those used for the World 35+ Championships with noted exceptions (IWWF rulebook)
- b) Six skiers total from each Age Category, Four maximum of any one gender. c) The best three scores from each Age Category to count towards each Age Category team score. For example, one country could win the +35 Age Division and another country could win the +45 Age Division.
- d) In slalom finals, skip one pass and go to the next higher speed or rope length. e) Finals will



2025 IWWF Pan American Senior Waterski Championships - Bulletin #3 (updates in red)

be one half of the total skiers entered and paid to ski in the preliminary round as posted at noon before the competition starts, rounded up to the next skier, but limited to a maximum of 8 skiers and a min. of 4 skiers.

- f) The first 5 of the Pan Am Ranking List (IWWF May 1st & 60 day list per iwwf rule) in a discipline in any divisions may ski as an Individual Skier.
- g) Slalom (2019)
 - (1) 2 Rounds Semi-Finals and 1 Round Finals
 - (2) Slalom Finals Selection- 1st half from the best score and the 2nd half from the best average score. If odd number- then last in based on best average score.
- h) Slalom (2025) If an event is expected to exceed daily time limits, the Tournament Council, at its sole discretion may decide to eliminate "g" above and use an LCQ Slalom Format. The numbers into finals is unchanged.
 - a) Round One Slalom shall consist of all eligible skiers who are seeded according to the current rules.
 - i) The top finalists minus one, shall proceed to the Slalom Finals. If the event has 4 or few skiers then all skiers qualify for the finals and an LCQ is not held.
If the event has 5 or more skiers, then follow chart:

# of skiers	Entered # Qualified from Rd 1 To Ski Finals	# Skiing in Round 2 LCQ with 1 Skier to Qualify to Finals	# of Skiers Qualified from Rd 2	Total # to finals
4	4	0	0	4
5	3	2	1	4
6	3	3	1	4
7	3	4	1	4
8	3	5	1	4
9	4	5	1	5
10	4	6	1	5
11	4	7	2	6
12	4	8	2	6
13	5	8	2	7
14	5	9	2	7
15	6	9	2	8



2025 IWWF Pan American Senior Waterski Championships - Bulletin #3 (updates in red)

16	6	10	2	8
17	6	11	2	8
18	6	12	2	8

- b) Round Two Slalom (LCQ) shall consist only of those skiers from the round one preliminary event who did not qualify for the slalom final round. The best slalom score, from this round shall proceed to the finals as the last seeded skier(s) in the finals.
- c) Slalom Finals shall be seeded by Round One Slalom Scores followed by the LCQ skier(s) seeded last and based on their Round Two Scores.
- d) Only First Round and Finals will count to Individual Overall and Team Scores. The second LCQ round will not count towards the Individual Overall and Team Scores. e) Ties
- i) Ties in the Preliminary Round, for the last spot(s) into the finals, shall be broken in the LCQ round. A run-off will not occur after the first round.
- ii) Ties in the LCQ round, for the last spot(s) shall be run-off per IWWF Rules iii) All other ties are per IWWF Rules.
- i) No Skier can be part of two divisions.
- j) The 65+ and over Divisions; Overall may calculate from two or three events. k) At the +35 Pan Am Championships, the first 4 Appointed Judges must be Level 1 Judges in all three events. Additional Appointed Judges may be Level 2 Judges in all three events. If an appointed judge is not available to fill a panel position, the Chief Judge may fill those positions with a Level 1 or Level 2 Judge who may be participating or spectating at the tournament (this panel judge may be a single event level 1 or 2 judge and is not required to hold a three event rating). Conflict rules to be applied per IWWF Rules.

1.10 IWWF LICENSE

Following an agreement by the IWWF World Congress held in 2019, the IWWF Executive Board approved the establishment of an IWWF License fee from 2021 where athletes wishing to compete in Ranking List (L) or Record capability (R) competitions of the IWWF are required to hold an IWWF License. It is requested that Federations ensure that all their athletes hold a valid [IWWF License](#) in order to participate in the 2025 IWWF Pan American Senior Waterski Championship.

1.11 ENTRY FORM / ENTRY FEE

Each Federation shall certify to the Chair of the IWWF Pan Am Waterski Council and the LOC, no later than July 15, 2025 its intent to compete via the following emails: addresses: danagarciawaterski@gmail.com and caitmccginty@gmail.com. Any Federation not meeting this requirement will not be allowed to compete until they have paid a fine of US \$200 to the IWWF Pan Am Confederation.



1.12 OFFICIAL ENTRY

The deadline for each Federation to declare, through the EMS, the names of the members of its team the events each will enter, the ratings of each skier, as well as the names of the official reserves is July 15, 2025 (75 days before the event). An entry is considered complete when the Skier's name is registered in the EMS and the full Entry Fee Payment has been received. The entry fee payment must follow the process as described below. Any skier entered as an Individual is also to be considered as a TEAM reserve. Any Federation not meeting this requirement will not be allowed to compete until the Federation pays a fine to the Pan American Representative at the Championships, of US \$10 per skier per day after the July 15, 2025 deadline for each skier not officially entered. Team or individual athletes not attending: In the event a Team or Individual Athletes (for whom their Federation has submitted a competition entry), fail to show up for a competition, their entry fee shall still be payable in full, unless a valid written excuse is received by 12 noon of 2 days the day before the start of the competition. A valid excuse may include a sickness certificate or a certificated injury and should be considered and agreed as valid by the Pan American Representative at the Championships. The Entry Fee for the event will be \$330.00 (US) per participant, the payment must be made as per the deadline in the following table. This Entry Fee includes a levy of \$30.00 (US) to assist Technical Officials with their travel costs.

Entry Deadline Rule Exception for 2025 +35 Event:

- a. Complete Entries (names, team members, events) are due 75 days before the start of the event. This includes entry fee payment.
 - i. This rule eliminates IWWF Rule 14.12, Intent to Enter required 90 days before the event with a \$50.00 deposit per skier
 - ii. This rule eliminates IWWF Rule 14.12, Official Entry required 60 days before the event.
- b. Any Entry, aside from a replacement of a team member with a reserve shall result in a \$10/day fee made payable to the Pan Am Region to benefit youth development.
- c. All entered skiers not initially declared "Team Members" will be considered "Alternate Team Members" for replacement purposes.
- d. Official Reserves, not entered to ski, must be declared on this deadline.

1.13 UNOFFICIAL PRACTICE

Sign up for unofficial practice MUST be done via [THIS GOOGLE FORM](#). See details on lakes, etc within form. The deadline to request training is **September 1st** and any requests after that



day will not be guaranteed.

Unofficial practice will be available between September 22nd and 28th at a cost of **US\$300.00 per hour**, and with a **minimum booking of 15 minutes**. Beginning September 29th, unofficial training will be on Lake 3 (trick and slalom only). Training should be paid by bank transfer or credit card via Paypal (and payment must include processing fees of +3-5%). If payment does not include fees, your set is not confirmed. A schedule will be posted 15 days before unofficial practice begins.

No lunch will be provided during Unofficial Practice and Familiarization.

1.14 DOPING CONTROL

In accordance with IWWF anti-Doping Rules, drug testing may be conducted during the competition. For additional information follow the link <https://iwwf.sport/anti-doping-information/>

1.15 LOCAL CURRENCY

The local currency is the USD. At most local stores and restaurants you can pay with all major credit cards and cash.

1.16 CEREMONIES

The Opening Ceremonies will be held at the venue on Wednesday, October 1st, after the Team Captains Meeting. There will be a reception after the Opening Ceremony with free admission for Athletes, Team Officials, Technical Officials and IWWF Pan American Executive Board Members.

The Closing Ceremonies and Final Night Banquet will be held on Sunday, October 5th. Admission to the Closing Ceremony & Final Night Banquet will be free for Athletes, one Team Official per Team (or two Team Officials for Teams of 8 or more athletes). Technical Officials and Pan American Executive Board Members. The cost for all others to attend will be per person. Tickets will be available for purchase on site (~\$70 USD), and a very limited quantity will be available. **Team Officials need to confirm the exact numbers attending to Organizers by this September 15th.**

1.17 FLAGS & ANTHEMS

Each team must bring 3 flags of their country. (Size approximately 100x150cm) All teams should send (MP3) of their national anthem or confirm the Anthem is on Spotify. If not on Spotify please email MP3 to caitmccginty@gmail.com (Subject line, Your Country/ Anthem).



1.18 PT & MASSAGE

Local Physical Therapist and Masseuse are easily searched via Google and we have several who will make house calls. Please try to book in advance.

1.19 TRANSPORTATION

Highly recommend rental cars via airport. Turo is also available for rental cars. Uber is available in the area as well.

1.20 SKI STORAGE

Pickos Ski School will supply storage for competitors' equipment on-site. Pickos Ski School is not responsible for equipment that is lost or damaged.

1.21 MEALS

Lunches will be provided for the competitors and 1 team official at no cost October 1 - 5th. We will likely have a food truck on-site Saturday and Sunday. TBD. Many options available within 1 mile + Doordash is available for delivery to the site.

1.22 BOATS AND ROPES

Official Boats: Ski Nautique (confirmed 2026 Ski Nautiques)

Towboat Speed Control System: Zero Off

Ropes: Masterline Non-Optimized (confirmed)

1.23 SPONSORSHIP INTEREST

In order to hold an incredible event with the best site conditions, accommodations, provisions, and an unforgettable final ceremony, we are seeking sponsorships to help make this possible. Please reach out to caitmccginty@gmail.com for more information. More details on sponsorship opportunities [HERE](#).

